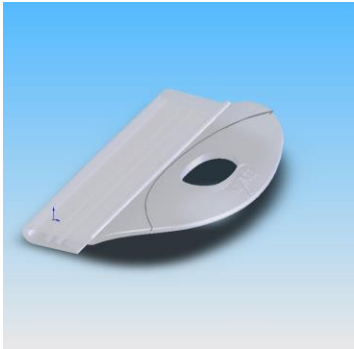
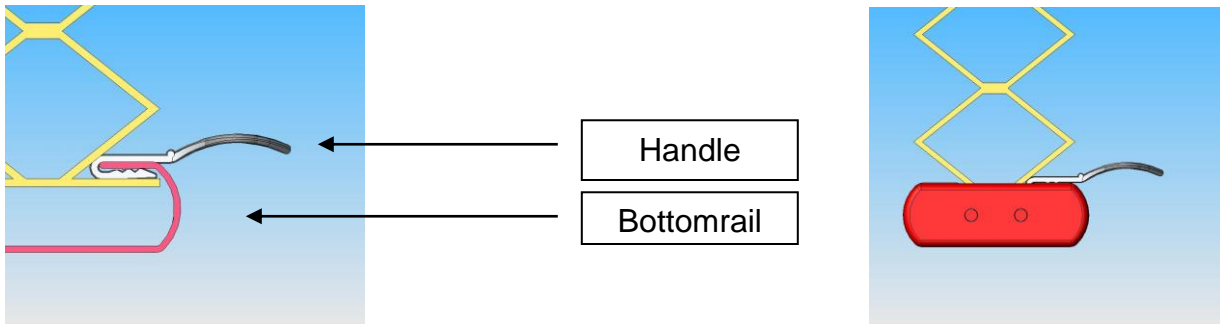


Cordless Cellular Shade Bottomrail Handle Installation Instructions

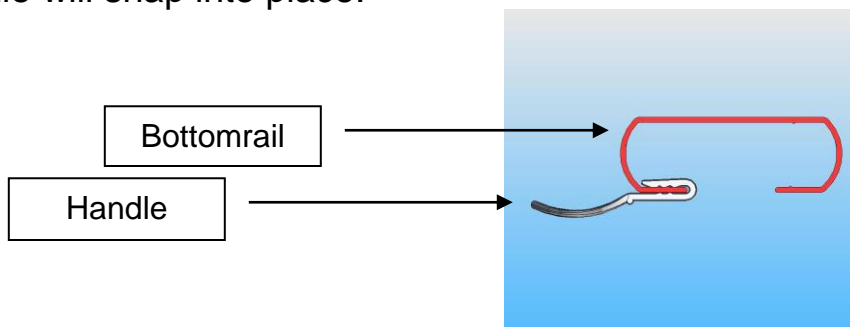
1. Kirsch Clear Cordless Bottomrail Handle.



2. Insert front lip of bottomrail handle into top of bottomrail. Handle will snap in place.

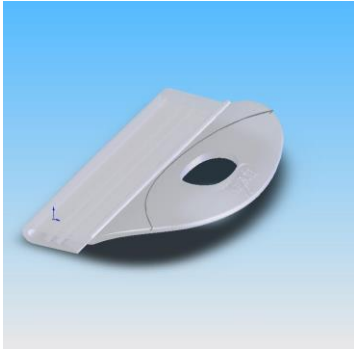


3. If installing a second handle on a cordless top down/bottom up shade, insert front lip of bottomrail handle onto the bottomside of the middlerail. Handle will be reversed orientation of the bottomrail handle with the brand facing downward. Handle will snap into place.

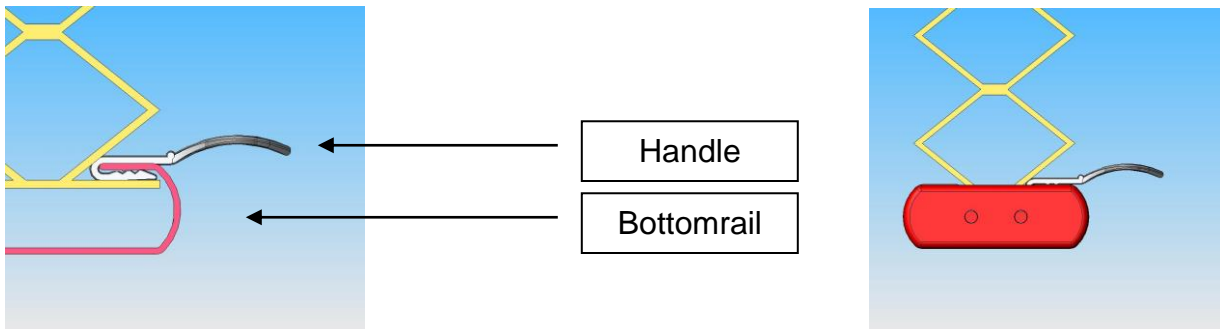


Cordless Cellular Shade Bottomrail Handle Installation Instructions

4. Levolor Clear Cordless Bottomrail Handle.



5. Insert front lip of bottomrail handle into top of bottomrail. Handle will snap in place.



6. If installing a second handle on a cordless top down/bottom up shade, insert front lip of bottomrail handle onto the bottomside of the middlerail. Handle will be reversed orientation of the bottomrail handle with the brand facing downward. Handle will snap into place.

